

Note:  
This plan was produced for the exclusive use of  
LEIGHTON PROPERTIES PTY LTD  
It is to be used as an attachment under the land sales act  
to sell freehold land off the plan.

All dimensions and areas are subject to final registration  
of the survey plan. All operational works information shown  
reflect the engineering plans by TOD NOOSA CONSULTING ENGINEERS  
approved by SUNSHINE COAST REGIONAL COUNCIL  
on 18th April 2008

Purchasers should contact the local authority to verify  
levels and the location of services before submitting plans  
for approval.

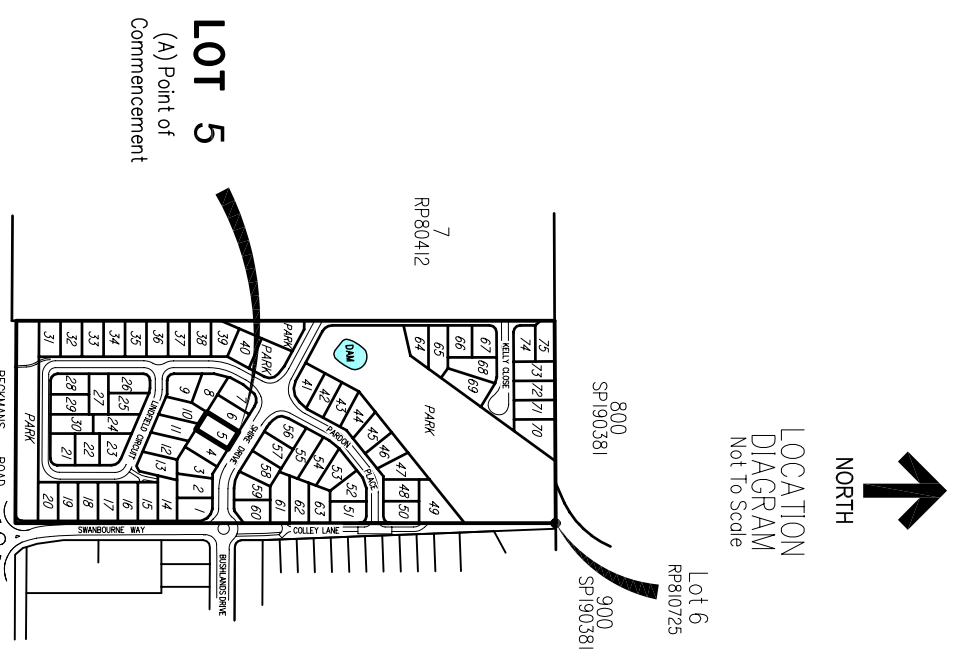
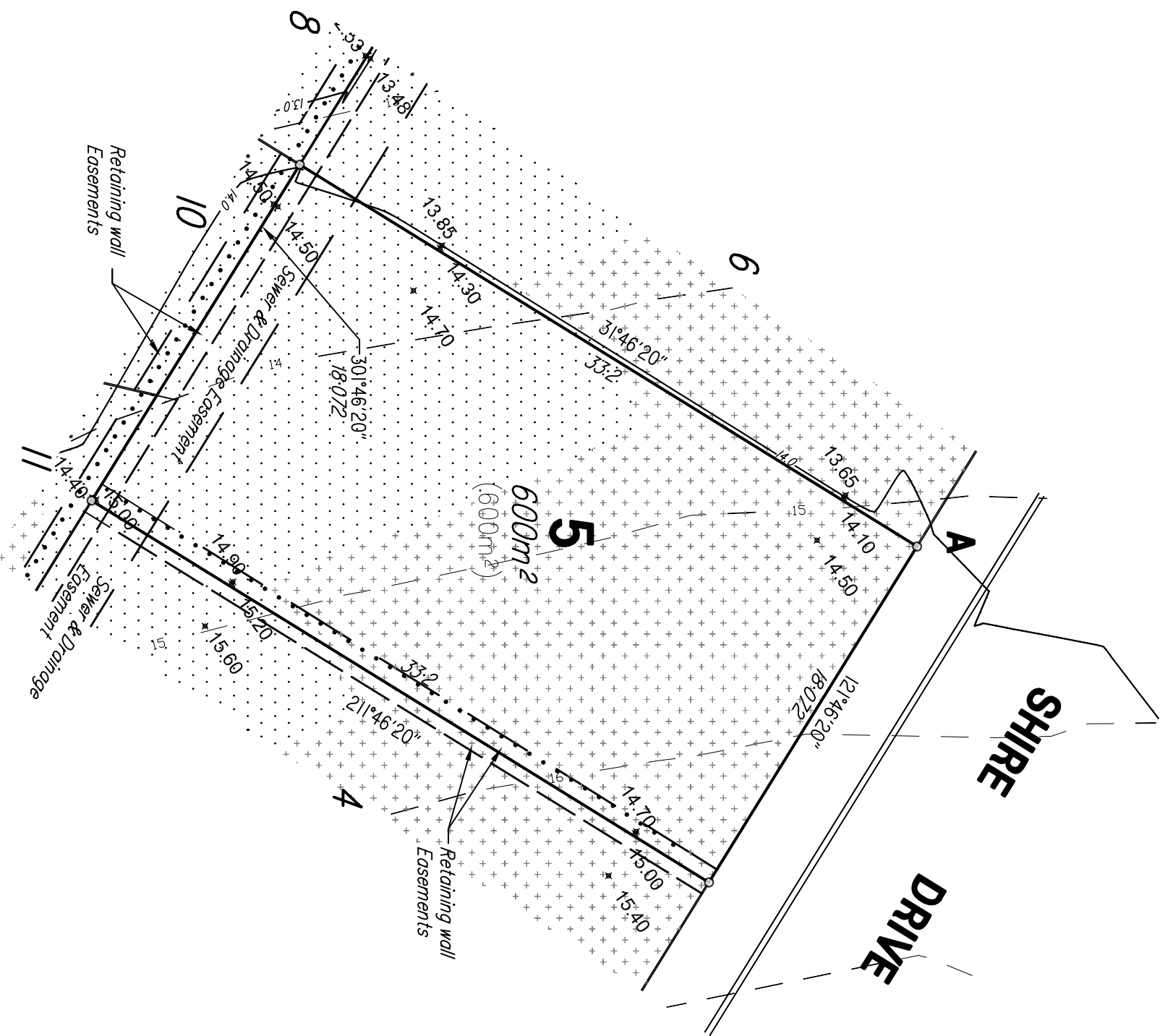
- Note:
- Retaining wall Easements  
cover extents of retaining walls  
and future fences.  
(To be confirmed by survey)
  - Cut/Fill based on engineers  
drawings: 18.04.08

## DISCLOSURE PLAN FOR PROPOSED LOT 5

This plan shows details of Proposed Allotment 5 on proposal  
plan M2099-09C approved by the Sunshine Coast Regional  
Council on the 4th October 2007

The Metes and bounds Description of the area of land being  
Proposed Allotment 5 described as part of lot 6 on RP810725  
Parish of Weyba, County of March, situated in Noosaville  
is as follows:

Commencing at a point (A), distant from the North East corner  
of Lot 6 on RP810725 by a line bearing 196°04'54" for a  
distance of 290.884 metres and bounded thence on the  
North, East, South and West by lines  
bearing 121° 46' 20" for a distance of 18.072 metres  
bearing 211° 46' 20" for a distance of 33.2 metres  
bearing 301° 46' 20" for a distance of 18.072 metres  
bearing 31° 46' 20" for a distance of 33.2 metres  
to the point of commencement containing an area of  
600m<sup>2</sup> more or less.



LEGEND	
★ 13.00	DESIGN SURFACE LEVEL
<b>112</b>	DESIGNED LOT No. ON PROPOSAL PLAN M2099-09C
(30)	DESIGNED DIMENSION ON PROPOSAL PLAN M2099-09C
(650m <sup>2</sup> )	DESIGNED AREA ON PROPOSAL PLAN M2099-09C
---	NATURAL CONTOURS
---	DESIGNED CONTOURS
.....	DESIGN RETAINING WALL
---	STAGE BOUNDARY
+	CUT AREA
.	FILL AREA

SCALE 0 2 4 6 8 10 12 14 metres (A3) 1:250

THE SCALE SHOWS ORIGINAL DRAWING SCALE - (A3 SIZE)  
FOR OTHER SCALES FROM THIS DRAWING - USE ONLY DIMENSIONS PROVIDED IN THIS DRAWING PLEASE ENQUIRE

drawn	SCP	THIS DOCUMENT MAY NOT BE COPIED OR TRANSMITTED IN ANY FORM OR BY ANY MEANS WITHOUT THE WRITTEN CONSENT OF JONES FLINT & PIKE PTY LTD.
checked	DNE	
approved	DNE	datum AHD

revision	details	date	init
	original issue	20.03.08	SCP
B	New Contours added	08.12.08	SCP
C	Easements added	18.12.08	SCP
E	Design Contours added	3.02.09	SGE
F	Retaining wall Easements added and Boundary amendments	03.03.09	SCP

**BECKMANS GREEN**  
**LEIGHTON PROPERTIES PTY LTD**  
**DISCLOSURE PLAN**

sheet	1	of	1	sheets
drawing number	<b>M2099-14 - 5 F</b>			
file name	M2099-14F-disc.dwg			
date	03.03.09			

**JFP**  
**JONES FLINT & PIKE**  
development consultants, planners, surveyors, landscape architects

JONES FLINT & PIKE PTY. LTD. A.C.N. 059 144 945  
BRISBANE - 482 House  
571 First and Merivale Streets  
Merivale QLD 4001  
Telephone (07) 3847 7161

SUNSHINE COAST  
231-239 Braman Avenue,  
Sunnyvale QLD 4558  
Telephone (07) 5443 2580

GLADSTONE  
89 Gordon Street,  
Gladstone Queensland, 4890  
Telephone (07) 4972 2100

www.jfp.com.au

