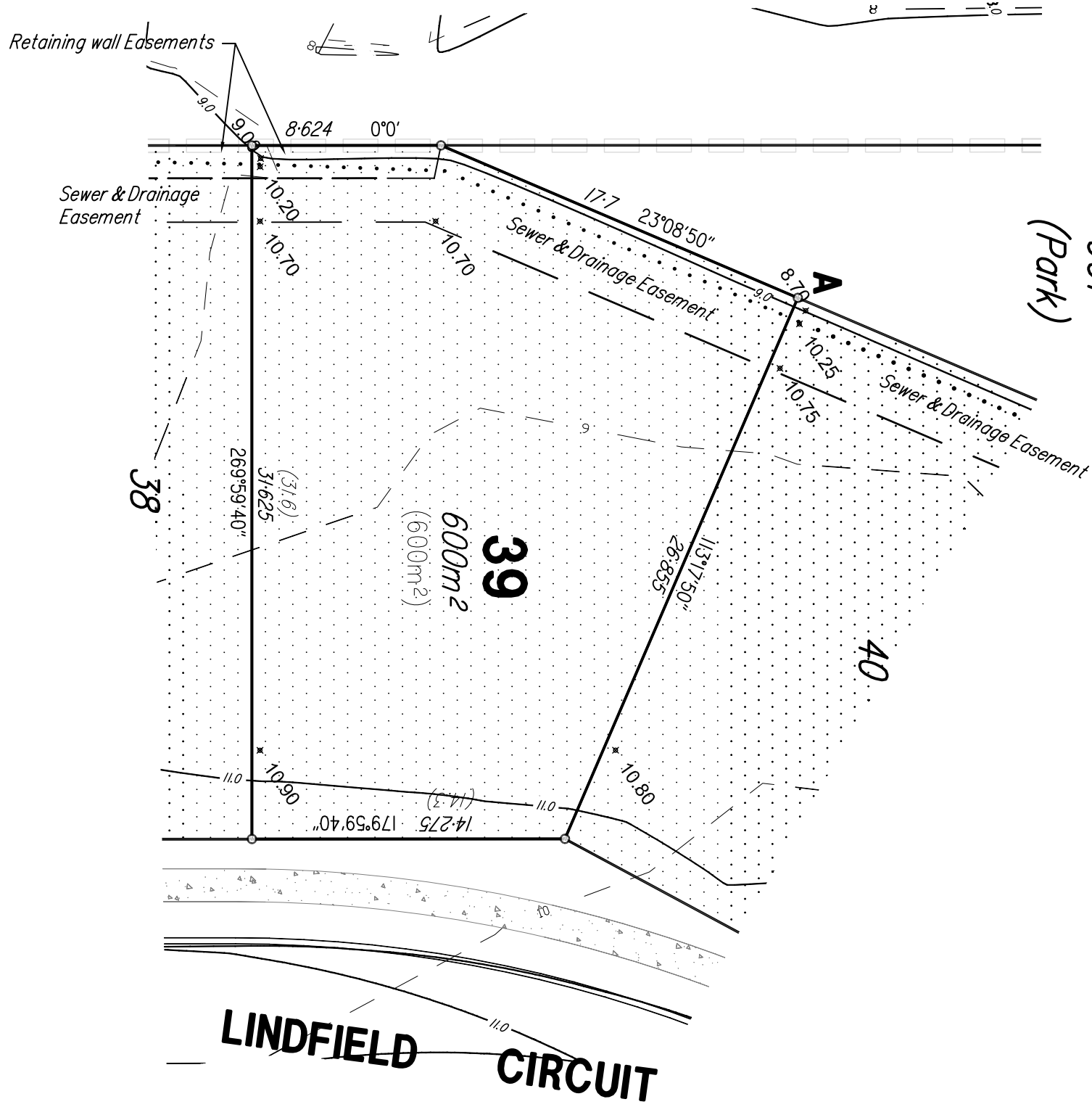


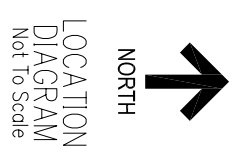
901
(Park)



LINDFIELD CIRCUIT

Note:
This plan was produced for the exclusive use of LEIGHTON PROPERTIES PTY LTD. It is to be used as an attachment under the land sales act to sell freehold land off the plan.
All dimensions and areas are subject to final registration of the survey plan. All operational works information shown reflect the engineering plans by TOD NOOSA CONSULTING ENGINEERS approved by SUNSHINE COAST REGIONAL COUNCIL on 18th April 2008
Purchasers should contact the local authority to verify levels and the location of services before submitting plans for approval.

- Note:
- Retaining wall Easements cover extents of retaining walls and future fences. (To be confirmed by survey)
 - Cut/Fill based on engineers drawings. 18.04.08



LOT 39
(A) Point of Commencement

DISCLOSURE PLAN FOR PROPOSED LOT 39

This plan shows details of Proposed Allotment 39 on proposal plan M2099-09C approved by the Sunshine Coast Regional Council on the 4th October 2007

The Metes and bounds Description of the area of land being Proposed Allotment 39 described as part of lot 6 on RP810725 Parish of Weyba, County of March, situated in Noosaville is as follows:

Commencing at a point (A), distant from the North East corner of Lot 6 on RP810725 by a line bearing 211°34'53" for a distance of 327.441 metres and bounded thence on the North, East, South and West by lines bearing 113°17'50" for a distance of 26.855 metres bearing 179°59'40" for a distance of 14.275 metres bearing 269°59'40" for a distance of 31.625 metres bearing 0°0' for a distance of 8.624 metres bearing 23°08'50" for a distance of 17.7 metres to the point of commencement containing an area of 600m² more or less.

LEGEND

★ 13.00 DESIGN SURFACE LEVEL

112 (30) DESIGNED LOT No. ON PROPOSAL PLAN M2099-09C

(650m²) DESIGNED DIMENSION ON PROPOSAL PLAN M2099-09C

PROPOSAL PLAN M2099-09C

NATURAL CONTOURS

DESIGNED CONTOURS

DESIGN RETAINING WALL

STAGE BOUNDARY

CUT AREA

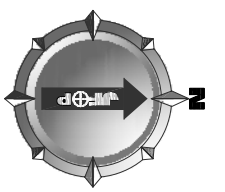
FILL AREA

JFOP
JONES FLINT & PIKE
development consultants, planners, surveyors, landscape architects

BRSBANE - JFP House
231-233 Bramston Avenue,
Spring Hill, QLD 4001
Telephone (07) 3844 7161

SUNSHINE COAST
59 Gordon Street,
Gladstone Queensland, 4800
Telephone (07) 4972 2100

www.jfp.com.au



SCALE 0 2 4 6 8 10 12 14 metres (A3) 1:250

THE SCALE SHOWS ORIGINAL DRAWING SCALE - (A3 SIZE)
FOR OTHER SCALES FROM THIS DRAWING - USE ONLY DIMENSIONS PROVIDED IN THIS DRAWING PLEASE ENQUIRE

| | | |
|----------|------|---|
| drawn | JFOP | COPYRIGHT © 2008 JONES FLINT & PIKE PTY LTD |
| checked | DNE | THIS DOCUMENT MAY NOT BE COPIED OR TRANSMITTED IN ANY FORM OR BY ANY MEANS WITHOUT THE WRITTEN CONSENT OF JONES FLINT & PIKE PTY LTD. |
| approved | DNE | datum AHD |

origin (BM) PSM107115 RL 18.431m

| revision | details | date | init |
|----------|--|----------|------|
| B | original issue | 20.03.08 | SCP |
| C | New Conditions added | 08.12.08 | SCP |
| E | Easements added | 18.12.08 | SCP |
| F | Design Contours added | 3.02.09 | SGE |
| | Retaining wall Easements added and Boundary amendments | 03.03.09 | SCP |

BECKMANS GREEN
LEIGHTON PROPERTIES PTY LTD
DISCLOSURE PLAN

| | | | | |
|----------------|---------------------|----|---|--------|
| sheet | 1 | of | 1 | sheets |
| drawing number | M2099-14-39F | | | |
| file name | M2099-14F-disc.dwg | | | |
| date | 03.03.09 | | | |