

DISCLOSURE PLAN FOR PROPOSED LOT 29

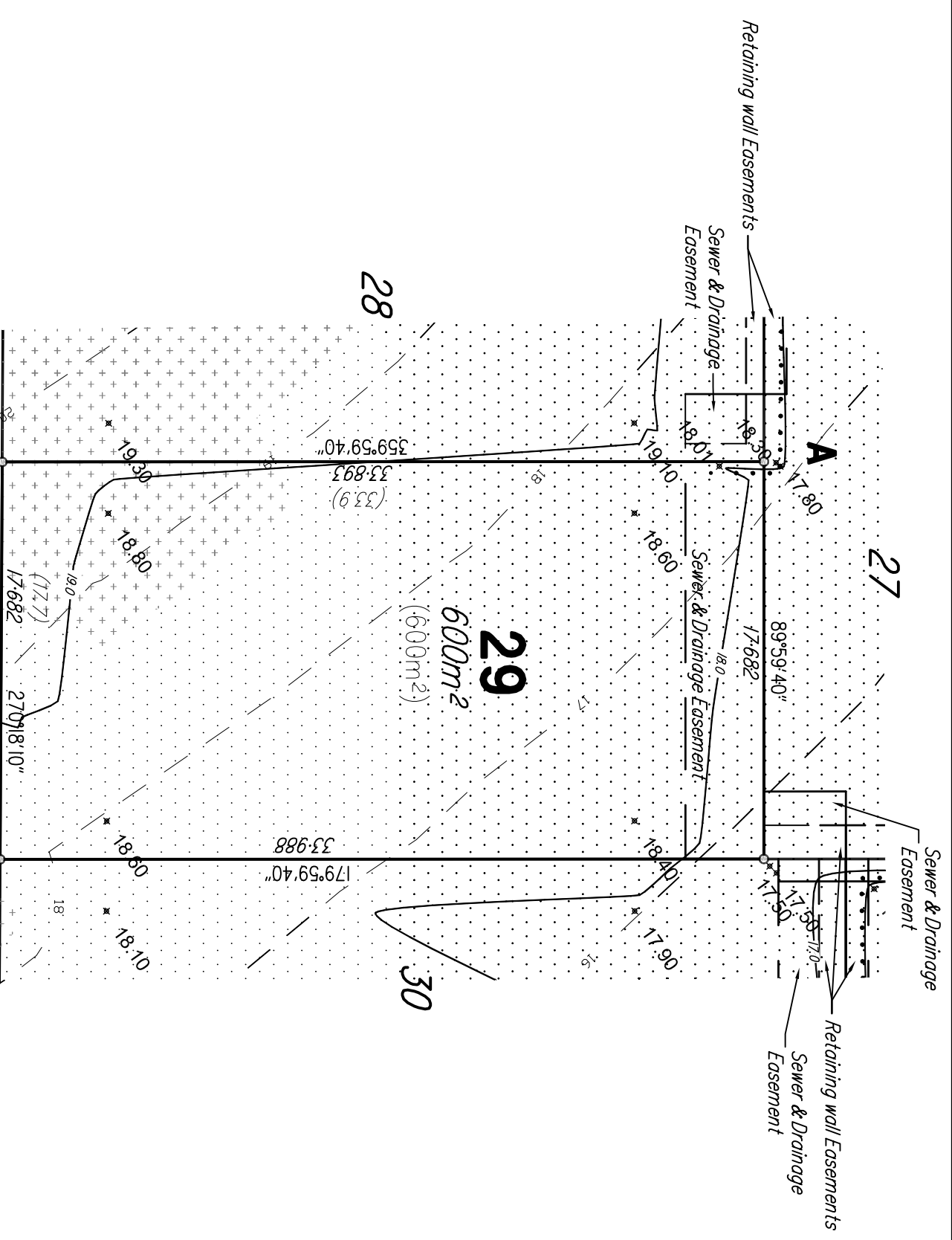
This plan shows details of Proposed Allotment 29 on proposal plan M2099-09C approved by the Sunshine Coast Regional Council on the 4th October 2007

The Metes and bounds Description of the area of land being Proposed Allotment 29 described as part of lot 6 on RP810725 Parish of Weyba, County of March, situated in Noosaville is as follows:

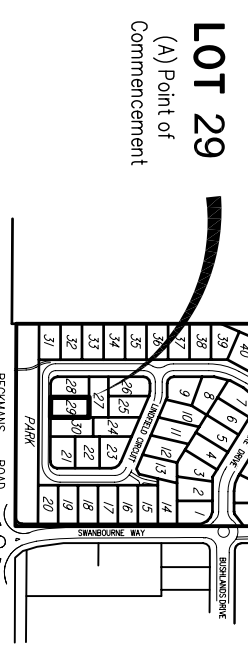
Commencing at a point (A), distant from the North East corner of Lot 6 on RP810725 by a line bearing 195°26'25" for a distance of 426.819 metres and bounded thence on the North, East, South and West by lines bearing 89° 59' 40" for a distance of 17.682 metres bearing 179° 59' 40" for a distance of 33,988 metres bearing 270° 18' 10" for a distance of 17,682 metres bearing 359° 59' 40" for a distance of 33,893 metres to the point of commencement containing an area of 600m² more or less.

Note:
This plan was produced for the exclusive use of LEIGHTON PROPERTIES PTY LTD
It is to be used as an attachment under the land sales act to sell freehold land off the plan.
All dimensions and areas are subject to final registration of the survey plan. All operational works information shown reflect the engineering plans by TOD NOOSA CONSULTING ENGINEERS approved by SUNSHINE COAST REGIONAL COUNCIL on 18th April 2008
Purchasers should contact the local authority to verify levels and the location of services before submitting plans for approval.

- Note:**
- Retaining wall Easements cover extents of retaining walls and future fences. (To be confirmed by survey)
 - Cut/Fill based on engineers drawings: 18.04.08



LINDFIELD CIRCUIT



LOT 29
(A) Point of Commencement

LEGEND	
	DESIGN SURFACE LEVEL
	DESIGNED LOT No. ON PROPOSAL PLAN M2099-09C
	DESIGNED DIMENSION ON PROPOSAL PLAN M2099-09C
	DESIGNED AREA ON PROPOSAL PLAN M2099-09C
	NATURAL CONTOURS
	DESIGNED RETAINING WALL
	STAGE BOUNDARY
	CUT AREA
	FILL AREA

SCALE	metres
0	2
4	8
10	14

(A3) 1:250

THE SCALE SHOWS ORIGINAL DRAWING SCALE - (A3 SIZE)
BUT NOT SCALE FROM THE DRAWING - USE ONLY DIMENSIONS PROVIDED FOR ORDER PLEASE ENQUIRE

drawn	checked	DNE	DNE
SCP	SCP	DNE	DNE

THIS DOCUMENT MAY NOT BE COPIED OR TRANSMITTED IN ANY FORM OR BY ANY MEANS, WITHOUT THE WRITTEN CONSENT OF JONES FLINT & PIKE PTY LTD.

revision	details	date	init
original	original issue	20.03.08	SCP
B	New Contours added	08.12.08	SCP
C	Easements added	18.12.08	SCP
E	Design Contours added	3.02.09	SGE
F	Retaining wall Easements added and Boundary amendments	03.03.09	SCP

**BECKMANS GREEN
LEIGHTON PROPERTIES PTY LTD
DISCLOSURE PLAN**

sheet	1	of	1	sheets
drawing number	M2099-14-29F			
file name	M2099-14F-disc.dwg			
date	03.03.09			

JF&P
JONES FLINT & PIKE
development consultants, planners, surveyors, landscape architects

JONES FLINT & PIKE PTY. LTD. A.C.N. 059,414,045
BRISBANE - JF&P House
571 First and Merivale Streets
Merivale, Brisbane, QLD 4000
Telephone (07) 3847 7161
www.jfp.com.au

SUNSHINE COAST
231-239 Braman Avenue,
Marina, Sunshine Coast, QLD 4558
Telephone (07) 5443 2580

GLADSTONE
89 Gordon Street,
Gladstone Queensland, 4850
Telephone (07) 4972 2100

