

DISCLOSURE PLAN FOR PROPOSED LOT 19

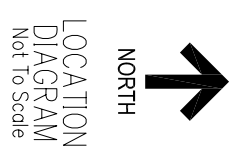
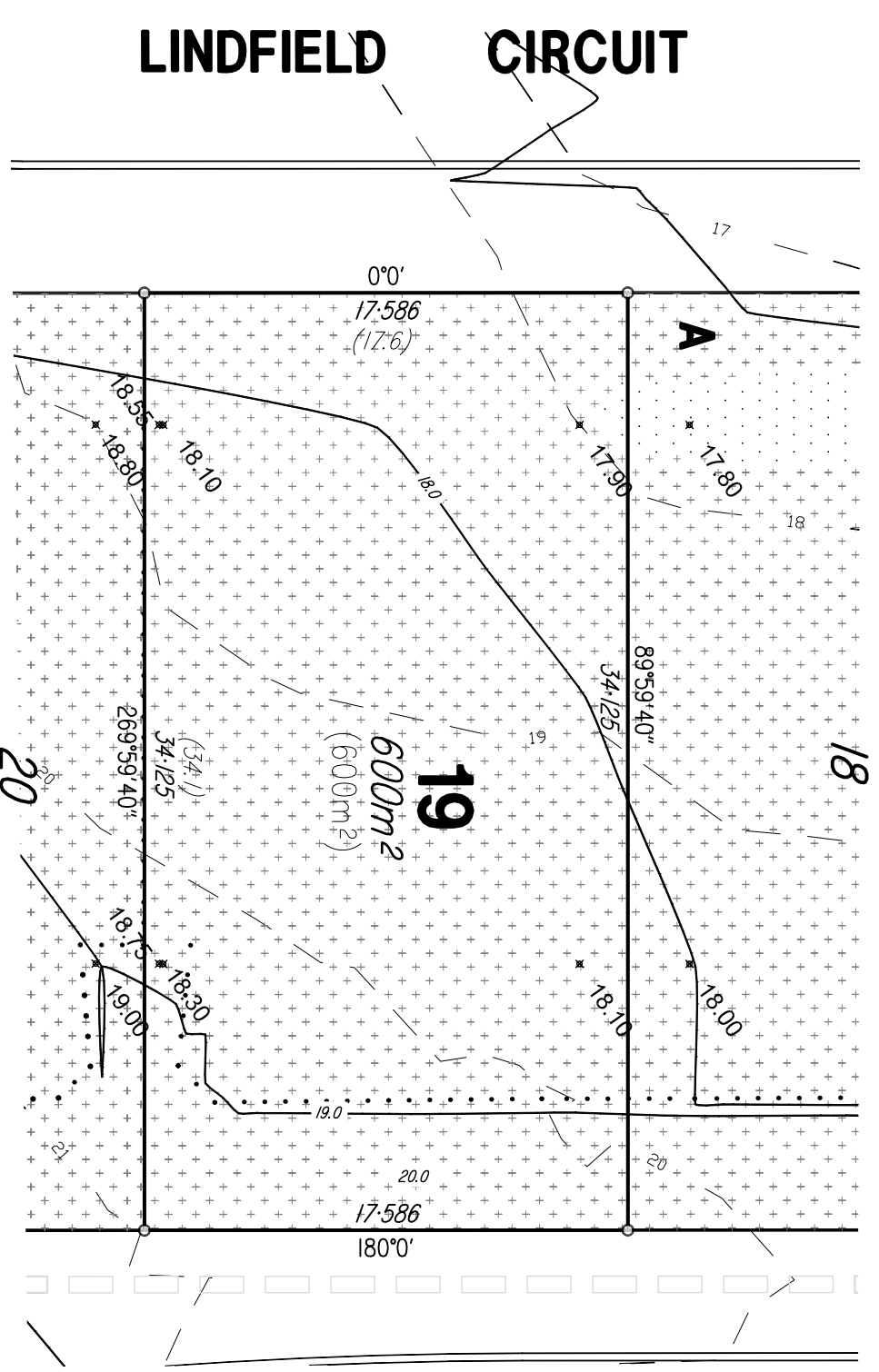
This plan shows details of Proposed Allotment 19 on proposal plan M2099-09C approved by the Sunshine Coast Regional Council on the 4th October 2007

The Metes and bounds Description of the area of land being Proposed Allotment 19 described as part of lot 6 on RP810725 Parish of Weyba, County of March, situated in Noosaville is as follows:

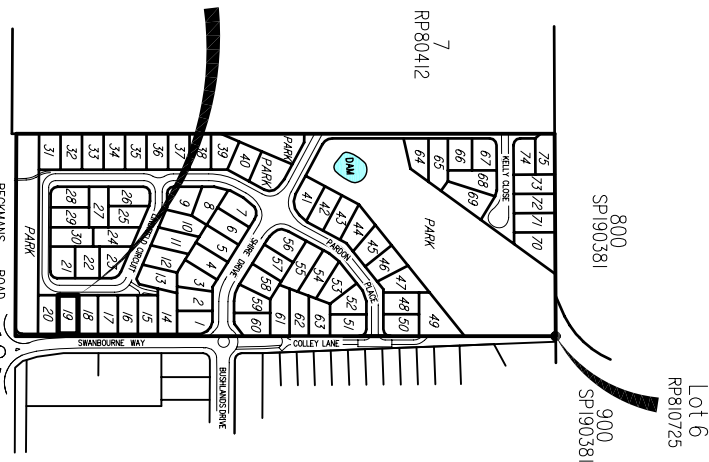
Commencing at a point (A), distant from the North East corner of Lot 6 on RP810725 by a line bearing 184°54'09" for a distance of 422.693 metres and bounded thence on the North, East, South and West by lines bearing 89°59'40" for a distance of 34.125 metres bearing 180°0' for a distance of 17.586 metres bearing 269°59'40" for a distance of 34.125 metres bearing 0°0' for a distance of 17.586 metres to the point of commencement containing an area of 600m² more or less.

- Note:
1. Retaining wall Easements cover extents of retaining walls and future fences. (To be confirmed by survey)
 2. Cut/Fill based on engineers drawings. 18.04.08

Note:
This plan was produced for the exclusive use of LEIGHTON PROPERTIES PTY LTD
It is to be used as an attachment under the land sales act to sell freehold land off the plan.
All dimensions and areas are subject to final registration of the survey plan. All operational works information shown reflect the engineering plans by TOD NOOSA CONSULTING ENGINEERS approved by SUNSHINE COAST REGIONAL COUNCIL on 18th April 2008
Purchasers should contact the local authority to verify levels and the location of services before submitting plans for approval.



LOCATION DIAGRAM
Not To Scale



LOT 19
(A) Point of Commencement

| LEGEND | |
|---------------------------|---|
| | DESIGN SURFACE LEVEL |
| 112 | DESIGNED LOT No. ON PROPOSAL PLAN M2099-09C |
| (30) | DESIGNED DIMENSION ON PROPOSAL PLAN M2099-09C |
| (650m²) | DESIGNED AREA ON PROPOSAL PLAN M2099-09C |
| | NATURAL CONTOURS |
| | DESIGNED RETAINING WALL |
| | STAGE BOUNDARY |
| | CUT AREA |
| | FILL AREA |

| SCALE | |
|--|------------|
| | (A3) 1:250 |
| THE SCALE SHOWS ORIGINAL DRAWING SCALE - (A3 SIZE) FOR OTHER SCALES FROM THIS DRAWING - USE ONLY DIMENSIONS PROVIDED IN THIS DRAWING PLEASE ENQUIRE | |
| drawn | SCP |
| checked | DNE |
| approved | DNE |

| revision | |
|--|----------|
| description | date |
| original issue | 20.03.08 |
| New Contours added | 08.12.08 |
| Easements added | 18.12.08 |
| Design Contours added | 3.02.09 |
| Retaining wall Easements added and Boundary amendments | 03.03.09 |

BECKMANS GREEN
LEIGHTON PROPERTIES PTY LTD
DISCLOSURE PLAN

| | | | | |
|----------------|--------------------|----|---|--------|
| sheet | 1 | of | 1 | sheets |
| drawing number | M2099-14-19F | | | |
| file name | M2099-14F-disc.dwg | | | |
| date | 03.03.09 | | | |

JF&P
JONES FLINT & PIKE
development consultants, planners, surveyors, landscape architects

JONES FLINT & PIKE PTY. LTD. A.C.N. 059,414,436
BRISBANE - JF&P House
571 First and Merivale Streets
Merivale, Brisbane, QLD 4000
Telephone (07) 3844 7161
www.jfp.com.au

SUNSHINE COAST
231-239 Braman Avenue,
Maroochydore, QLD 4558
Telephone (07) 5443 2580

GLADSTONE
89 Gladstone Street,
Gladstone Queensland, 4800
Telephone (07) 4972 2100

